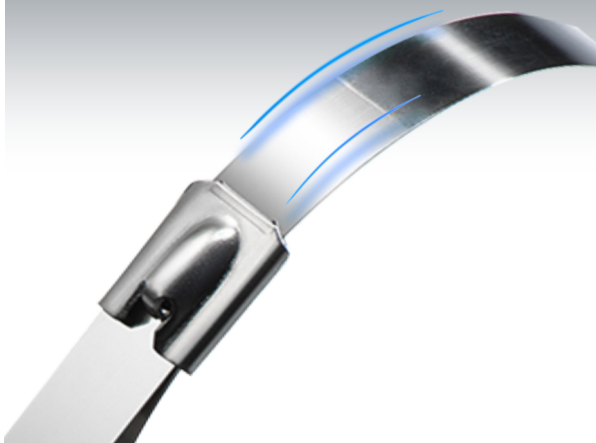

Stainless Steel Cable Ties & Accessories



The stainless steel cable ties have fully rounded, AISI #1 edges for safety —no burrs, corners or sharp edges that can harm cables or their installers. A vibration-resistant version features a wave-form spring crimp to prevent the tie from slipping down the bundle under vibration.

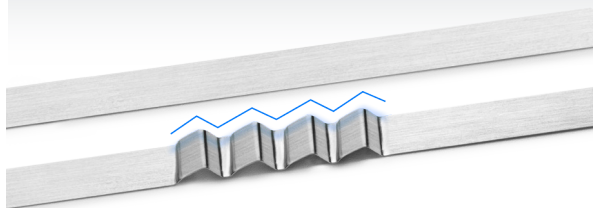
Delicate.

Fully rounded edges



Safer.

Wave-form spring crimp for vibration resistance



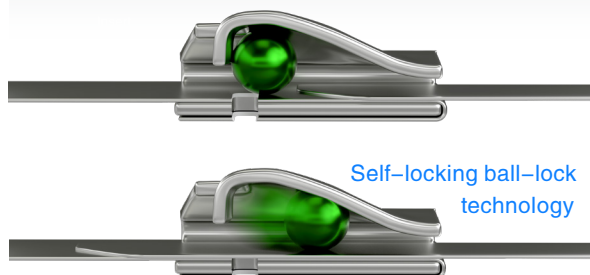
Stronger.

Loop tensile strength performance



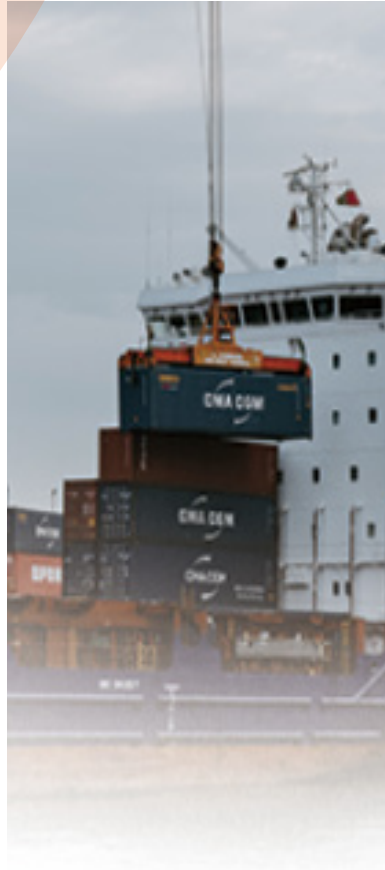
Faster.

The ball-lock cable ties are engineered with a single-piece design, making installation fast and easy. Simply insert and lock.



Applications.

Full line of stainless steel fastening solutions for tough environments



01 Oceanic climate

02 Chemicals

Chemical processing, civil infrastructure, food and beverage, metals and mining, oil and gas, power generation, rail, pulp and paper, renewable energy, water/wastewater treatment.



03 Bad temperature



04 Construction site



05 Flame

Corrosion and harsh environment protection, continuous operation and sustainability, extreme temperature protection.

Better than ever.

Stainless steel is the go-to cable tie for mechanical and electrical engineers, project managers and contractors looking for quality, availability and total project cost reduction.

Releasable ties

Heavy-duty bands up to 18 mm (0.75") width for up to 8800 N (2000 lb.) tensile strength. Available assembled and pre-cut or reels and buckles.



Ladder-lock ties

Ladder-type locking mechanism provides secure bundling. More precise locking pattern stainless, uncoated and polyester coated.



Heavy-duty bands

Heavy-duty bands up to 18 mm (0.75") width for up to 8800 N (2000 lb.) tensile strength. Available assembled and pre-cut or reels and buckles.



CT3 installation tool

Ratchet design provides high tension installation. Long-lasting shear cutter easily trims excess band.



DAS250 installation tool

Adjustable, automatic tension system. Cuts clean and close to head. Pistol grip reduces installation forces and user fatigue.

